

SailboatData.Com

- HOME
- FOR SALE
- SAILBOAT CLASS/OWNER LINKS
- SEARCH BY DESIGNER
- SEARCH BY BUILDER
- NEW SEARCH
- ENTIRE SITE SEARCH
- FORUM
- LEGAL
- SITE MAP
- ADVERTISE
- SEARCH INTRUCTIONS
- Using this page to **SELL YOUR BOAT**
- ABOUT US
- CONTACT

LANCER 36



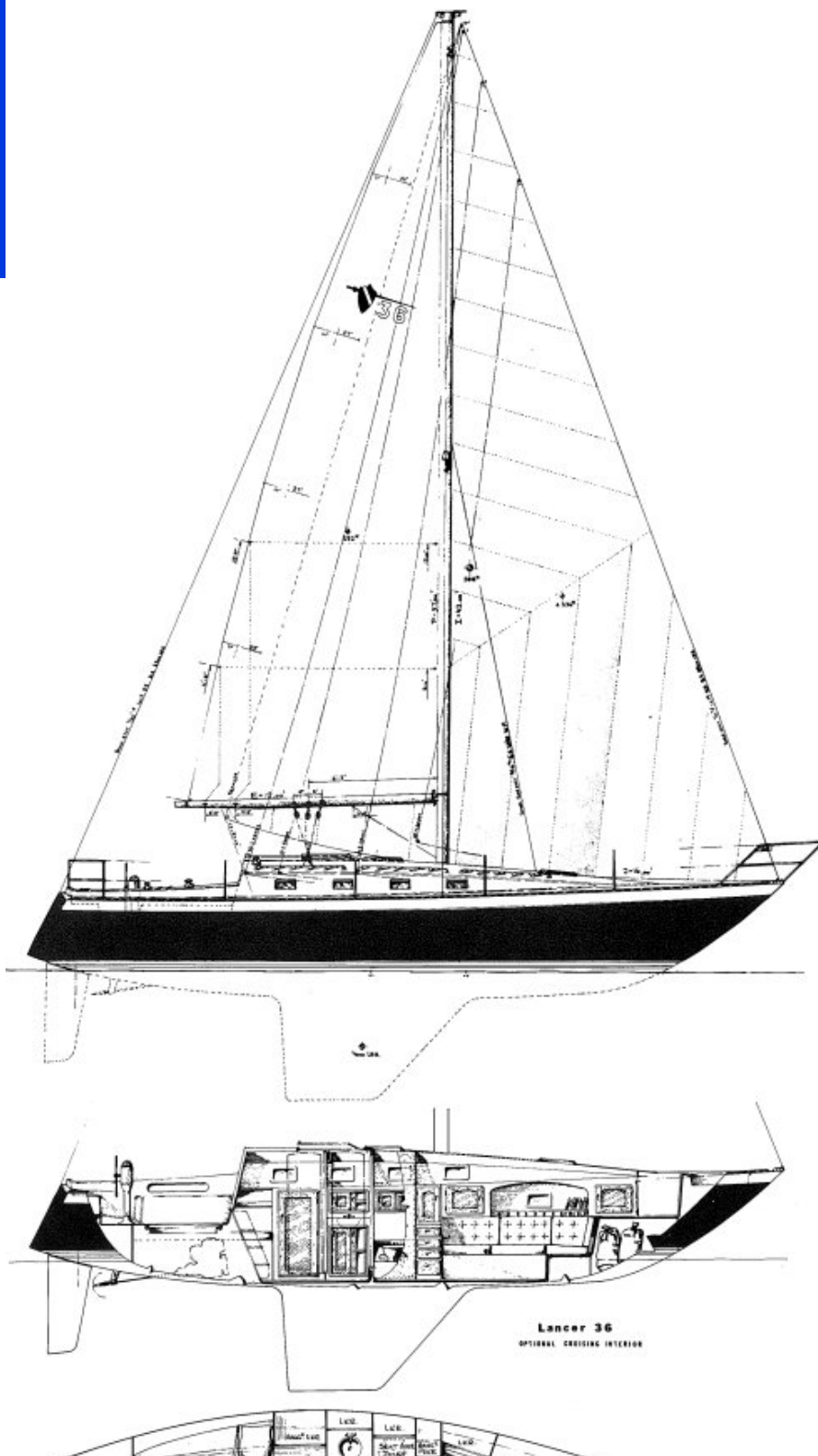
ALLIED INTERNATIONAL

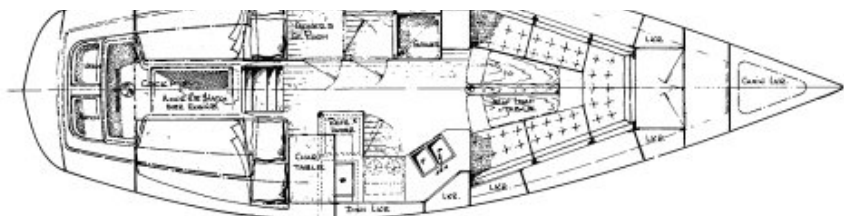
We provide the technology.
From under the sea ...
to outer space,
with fans, bearings, slides,
goosenecks, joysticks,
and capacitors;
Our parts go to EXTREMES!

Is your social media
dead in the water?



VMGMedia.us.com





Hull Type: Fin w/spade rudder **Rig Type:** Masthead Sloop
LOA: 36.17' / 11.02m **LWL:** 29.00' / 8.84m
Beam: 11.75' / 3.58m **Listed SA:** 558 ft² / 51.84 m²
Draft (max.) 6.20' / 1.89m **Draft (min.)**
Disp. 10500 lbs./ 4763 kgs. **Ballast:** 4000 lbs. / 1814 kgs.
SA/Disp.: 18.68 **Bal./Disp.:** 38.09% **Disp./Len.:** 192.20
Designer: Bill Lee

Builder: Lancer Yacht Corp. (USA)
Construct.: FG **Bal. type:**
First Built: 1973 **Last Built:** 1985 **# Built:**

AUXILIARY POWER (orig. equip.)

Make: Yanmar **Model:**
Type: Diesel **HP:** 27

TANKS

Water: 50 gals. / 189 ltrs. **Fuel:** 30 gals. / 114 ltrs.

RIG DIMENSIONS **KEY**

I: 42.00' / 12.80m **J:** 16.00' / 4.88m

P: 37.00' / 11.28m **E:** 12.00' / 3.66m

PY: **EY:**

SPL: **ISP:**

SA(Fore.): 336.00 ft² / 31.21 m² **SA(Main):** 222.00 ft² / 20.62 m²

Total(calc.)SA: 558.00 ft² / 51.84 m² **DL ratio:** 192.20

SA/Disp: 18.68 **Est. Forestay Len.:** 44.94' / 13.70m

BUILDERS (past & present)

More about & boats built by: [Lancer Yacht Corp. \(USA\)](#)

DESIGNER

More about & boats designed by: [Bill Lee](#)

RELATED LINKS

Boatbrochure.com (orig. brochures and manuals) www.boatbrochure.com

[and manuals](#)**SEE ALSO:****Related Boat:**[LANCER 36 \(FR\)](#)**NOTES**

Based on the successful west coast racer 'Chutzpah', the LANCER 36 was in production for almost 20 years. A number of different interior and rig options were available. (displayed here with opt. cruising interior).

